

Greene County Medical Center
2025

AUXILIARY ANNUAL REPORT



MESSAGE

FROM FY2025 PRESIDENT

This has been a good year for the GCMC Auxiliary. The fall Salad Luncheon, Holiday of Lights, and the Christmas Candy Sale were very successful.

“And when we paired those funds with the profits from the Gift Garden, we were able to donate funds to the hospital whenever we received requests”

We also awarded \$1,000 scholarships to three individuals who were starting or extending their training in a medically related field.

I was especially proud of the extensive cleaning of the gift shop and storage rooms in an attempt to substantially reduce our inventory. We had massive sales and donated some items to bargain shops. We now have a much more spacious and inviting shop. People using walkers or wheelchairs can easily move around and see our merchandise. Before ordering last spring, we asked for suggestions from GCMC staff. We also received information from other hospital shops in Iowa as to which vendors had good deals on shipping and which didn't require ordering large quantities. The hospital tee shirts, sweatshirts and jackets that were suggested by our liaison, Nancy Houska, have been well received. Our partnership with CHiRP, a local coffee/drink establishment, has also been popular and brings more employees into the shop. We have lengthened our hours and are now open four days per week instead of three. All of these changes have improved our profits. We are a non-profit organization, so any money that we make can be given back to the hospital to purchase needed equipment, improve our shop or show appreciation for the hospital employees.

I am pleased that the auxiliary has continued to assist with the monthly LifeServe Blood Drives, which collected 394 units of blood in the last fiscal year and thus saved or sustained 1,182 lives. Having the blood drives in the hospital lobby instead of a local church has made it possible for more GCMC staff members to donate and has improved the visibility of this service in Greene County.

In the past year, we have gained four new members who are now working in the Gift Garden, and a fifth new member will be joining us soon.

We are looking forward to another productive year and will assist the hospital in whatever way that we can.

SUE RIEDER

Past President

Scholarships

BAILEY BIGGART

- 2025 Graduate of Greene County High School
 - Daughter of Stacey & Jon Biggart
- Attending Iowa Central Community College in the fall
 - Pursuing a degree in psychology

SADIE GILBERTSON

- Graduate of Greene County High School
- Daughter of Michele & Danny Gilbertson
- Attending Iowa Central Community College
 - Pursuing a nursing degree

AMBER GILBERTSON

- Graduate of Lawton-Bronson High School
- Attending Iowa Central Community College
 - Pursuing radiology technologist degree

NEW MEMBERS

Nancy Scheffers

Nancy is a Jefferson resident and started volunteering in the Gift Garden a few months ago. Other projects she hopes to assist with include clerical needs and special events. Nancy worked in customer service at American Athletic for 28 years and enjoys golf, swimming, sewing and puzzles. She joined the Auxiliary to meet people, be helpful and to keep busy.

Janet Wilkens

Janet spent 38 years working as a registered surgical nurse prior to volunteering with the Auxiliary. She looks forward to being active in the Gift Garden and helping with clerical needs at the medical center, Auxiliary special events and the blood drive. She lives in Gowrie and is involved in her church. She enjoys reading, painting, biking, golf and piano. She joined the Auxiliary with an interest in helping others.

Martha Monroe

Martha enjoys working in the Gift Garden and looks forward to helping at events and blood drives. She is a Jefferson resident, a member of PEO, Friday Club and has served as a 4-H leader, Sunday school teacher, member of Jefferson Matters Design Team and Meals on Wheels. She enjoys travel, gardening and reading. Martha volunteers to have fun while serving the community, to work in a team environment and meet new people.

Brenda Muir

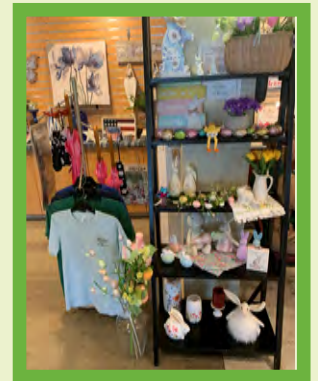
Brenda worked over 30 years at Jefferson Scranton/East Greene (now GCCSD). She lives in Jefferson and is excited to meet and be around new people, which is why she joined the Auxiliary. She has served as past treasurer and Sunday school teacher at Rippey Methodist Church and is a member of the Grow Greene County Gaming Board. She enjoys reading, biking, exercise, game shows and her grandchildren.

FY 2025: A YEAR OF

If there was one theme that defined the Auxiliary's journey through Fiscal Year 2025, it was change...and it was felt across nearly every facet of this invaluable organization. From leadership transitions to a revamped Gift Garden with expanded hours, there is a palpable sense of excitement as we look ahead to Fiscal Year 2026.

The annual Salad Luncheon marked a major milestone, returning for its second year after the pandemic hiatus. The event was a huge hit and set a positive tone for the remainder of the calendar year. It wasn't long before members shifted their focus to the Holiday of Lights and Candy Sale, further cementing their role in bringing the community and Team Members together.

But the excitement didn't stop there. Once the holiday rush subsided, the Gift Garden embarked on an ambitious redesign. Volunteers combed through inventory, held major sales to clear out older items and took a few days to clean, reorganize and reconfigure the entire shop. The result? A sleek, more inviting, more easily accessible space with improved flow that perfectly showcases the one-of-a-kind gifts, décor and personal items which the Gift Garden is known for.



CHANGE AND GROWTH FOR THE AUXILIARY

The Auxiliary also listened closely to its supporters. Based on input, new products were added to the Gift Garden's inventory, including locally sourced treats, Greene County Medical Center apparel, cozy blankets, pillows and assorted flavored coffees.

In response to popular demand, the Gift Garden expanded its hours and is now open from 9:30 a.m. to 3:30 p.m. Monday through Thursday, giving shoppers even more flexibility.

Perhaps one of the most exciting collaborations of the year came with CHiRP Coffee. Twice a month, the Auxiliary offers a delightful beverage delivery service, bringing fresh, locally made pick-me-ups right to the Gift Garden for the Team to enjoy.

Between the revamped space, fresh inventory and buzzing activity, whether the hustle and bustle of a CHiRP delivery, the energy during a sale or a packed house at blood drives, the vibrancy in the main lobby at Green County Medical Center is undeniable. It's clear the Auxiliary is in full swing, ready to keep growing and serving the medical center and the community in new and exciting ways as they head into the new fiscal year.

Donations

Recipients	Amount
Coffee for 2025	\$2,000.00
Greene Backer/Scopes	\$2,000.00
Nursing Certs/Subscriptions	\$1,000.00
Hospital Week Pizza	\$500.00
Tom's Taxi	\$175.00
Family Medicine Clinic Waiting Room Books & Toys	\$800.00
Scholarships	\$1,500.00



PROFIT & LOSS

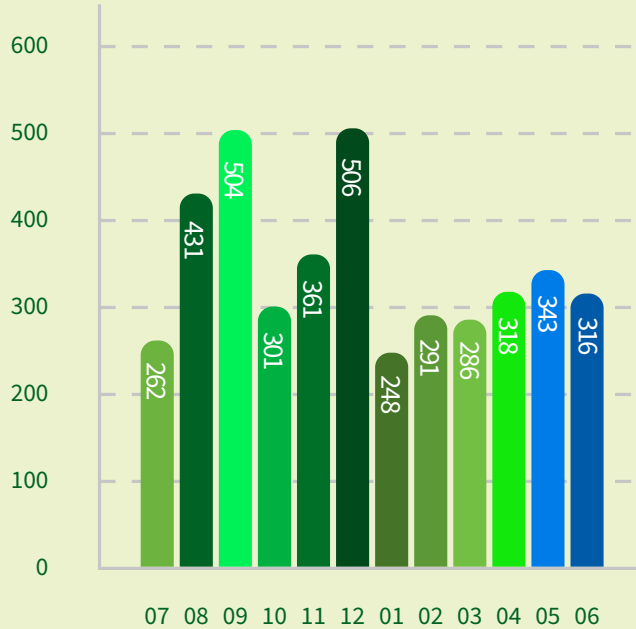
GREENE COUNTY MEDICAL CENTER AUXILIARY

July, 2024 - June 30, 2025

INCOME	
Distribution Account	Total
Daily Sales	
GCMC Logo Items	10,490.90
Merchandise	2,379.01
Payroll Deduct Payment	22,800.61
Snacks	3,240.32
Total for Daily Sales	\$38,910.84
Donation and Gifts	11.00
Dues	210.00
Fundraiser	
Candy Sale	1,475.85
CHiRP Coffee	3,499.82
Holiday of Lights	3,508.00
Luncheon Income	3,795.00
Scrub Sale Fundraiser	1,616.22
Total for Fundraiser	\$13,894.89
Interest Inc	4.19
Pop Machines	701.95
Total for Income	\$53,732.87
Cost of Goods Sold	
Gross Profit	\$53,732.87

EXPENSES	
Distribution Account	Total
Advertising	111.00
Auxiliary Scholarship Award	1,500.00
Donation	6,572.09
Dues & Subscriptions	550.00
Fundraiser Expense	
CHiRP Coffee Expense	2,831.17
Holiday of Lights Expense	192.22
Luncheon Expense	790.41
Scrub Sale Expense	1805.90
Total for Fundraiser Expense	\$5,619.70
Merchandise for Resale	2,327.92
Freight	257.94
GCMC Logo Items Expense	7,704.00
Merchandise Expense	18,066.90
Pop Expense	182.25
Shop Supplies	143.10
Snacks Expense	320.79
Square Register Credit Card Fee	352.63
Stamps	14.60
Total for Merchandise for Resale	\$29,370.12
Office Supplies	341.85
Total for Expense	\$44,064.76
Net Operating Income	\$9,668.11
Other Income	
Other Expenses	
Net Other Income	0
Net Income	\$9,668.11

VOLUNTEER HOURS



July 1, 2024 - June 30, 2025

4167

LOOKING AHEAD TO FY2026

Officers

President
Joyce Kurth

Vice President
Paula Shriver

Secretary
Diane Jackson

Financial
GCMC Staff & Nancy Houska

Committee Chairs

Gift Garden Pop: Joyce Kurth	Holiday of Lights: Lynda Cochran
Gift Garden Cards: Ann Frederick	Employee Appreciation: Sue Rieder
Christmas Candy Sale: Teresa Chesler	Gift Garden Candy: Connie Allensworth
Blood Drives: Deb Keifer & Sue Rieder	Membership: Rhett Wright & Sue Rieder
Scholarship: Teresa Chesler & Diane Jacobsen	
Buyers Gift Garden: Lynda Cochran & Paula Shriver	
Salad Luncheon: Joyce Kurth & Deanna McDonald	
Historian/Newsletter: GCMC Community Relations	
Gift Garden Scheduling & Volunteer Hours: Sue Rieder	
New Member Recruitment: Sue Rieder & Nancy Houska	